



MALDIVES  
INLAND REVENUE  
AUTHORITY



# QUARTERLY REPORT Q2

---

**20** April  
**21** May  
**21** June

## ABBREVIATIONS

18Q1	2018, First Quarter
18Q2	2018, Second Quarter
18Q3	2018, Third Quarter
18Q4	2018, Forth Quarter
19Q1	2019, First Quarter
19Q2	2019, Second Quarter
19Q3	2019, Third Quarter
19Q4	2019, Fourth Quarter
20Q1	2020, First Quarter
20Q2	2020, Second Quarter
20Q3	2020, Third Quarter
20Q4	2020, Fourth Quarter
21Q1	2021, First Quarter
21Q2	2021, Second Quarter
ADF	Airport Development Fee
ASC	Airport Service Charge
ATF	Airport Taxes and Fees
BPT	Business Profit Tax
EWT	Employee Withholding Tax
GGST	Goods and Services Tax (Non-Tourism Sector)
GRT	Green Tax
GST	Goods and Services Tax (refers to both TGST and GGST)
MIRA	Maldives Inland Revenue Authority
MVR	Maldivian Rufiyaa
NWT	Non-Resident Withholding Tax
TGST	Goods and Services Tax (Tourism Sector)
USD	United States Dollar
WHT	Withholding Tax

# CONTENTS

## A. REVENUE COLLECTION



## B. ACTIVITIES DURING THE QUARTER



## C. SNAPSHOTS OF THE QUARTER



## C. DETAILED REVENUE FIGURES

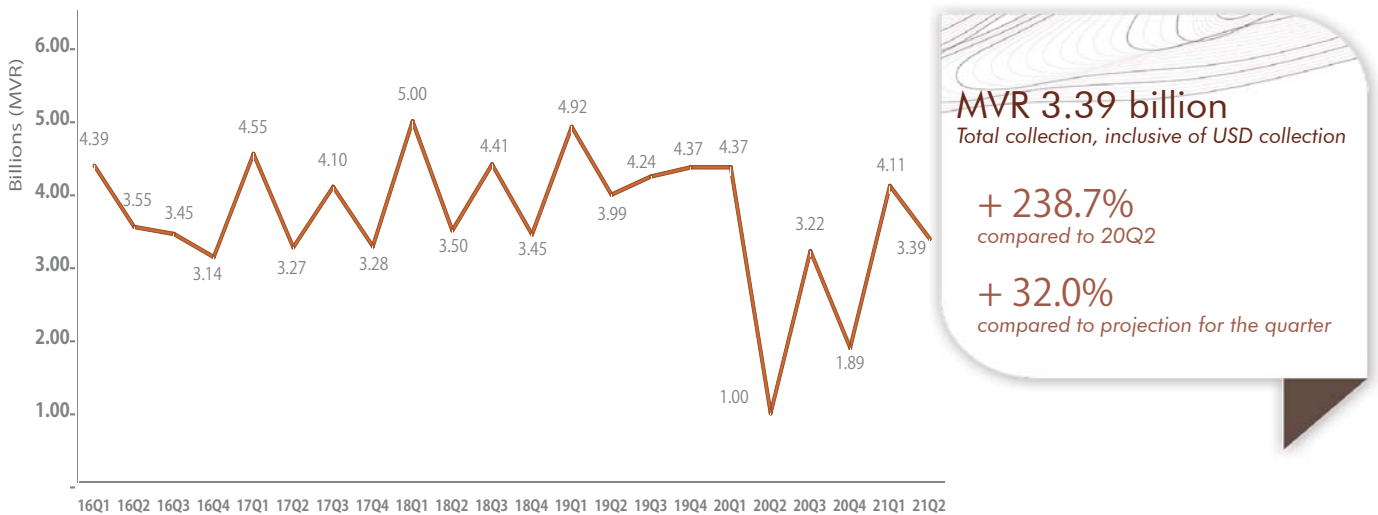


# A. REVENUE COLLECTION

## I. TOTAL REVENUE COLLECTION

### 1.1

#### TOTAL REVENUE COLLECTION



The quarterly revenue collection for 21Q2 is MVR 3.39 billion. This is an increment of 238.7% to the corresponding quarter of 2020.

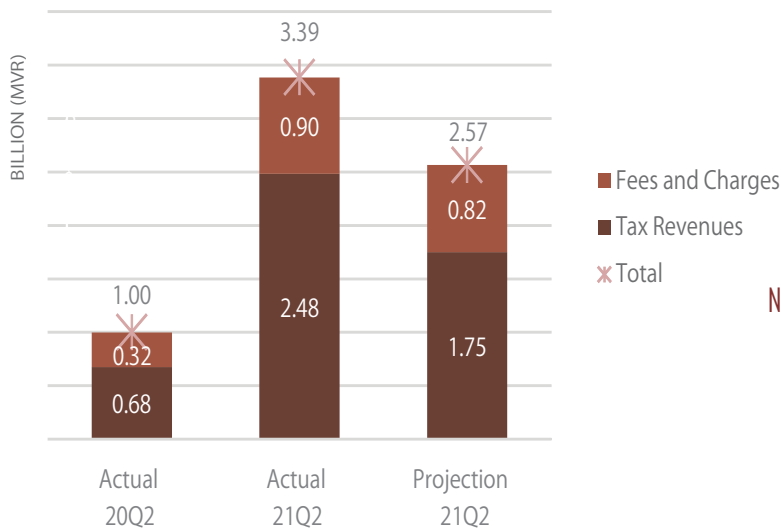
With the first case of Covid-19 detected in March 2020, Public Health Emergency was announced nationwide and Male' City was placed under lockdown on April 17. All deadlines that fell within lockdown period were extended, with some non-tax deadlines extended to 2021.

The pandemic led to a global economic recession and the economic activity, mainly in the tourism sector, had almost come to a temporary standstill as tourist resorts were closed down. Significant portion of the revenue is derived from the tourism sector, and the steep decrease in tourist arrival led to a significant decline in tourism related revenues. However, since the re-opening of the resorts, rebound of the tourism sector has led to a surge in revenue collection. Additionally, the collection of deferred rent began in June 2021. This led to the increment in collection for 21Q2 compared to 20Q2. While there were some extended deadlines in 21Q2 as well, facilitation of online payment for all taxes and fees collected by MIRA, and the fact that some taxpayers are mandated to file and pay online meant that more taxpayers paid their taxes and fees on time.

Quarterly revenue exceeded the forecasted revenue due to increment in GST (mainly from tourism sector) and Airport Taxes and Fees for 21Q2.

1.2

REVENUE COMPOSITION OF 21Q2



TAX REVENUES

**MVR 2.48 billion**

+ 267.5%  
compared to 20Q2

+ 42.0%  
compared to projection for the quarter

NON-TAX REVENUES

**MVR 901.5 million**

+ 178.4%  
compared to 20Q2

+ 10.4%  
compared to projection for the quarter

TAX REVENUES

Tax revenues totaled to MVR 2.48 billion in 21Q2. This is an increment of 267.5% compared to 20Q2. Revenue collection in 20Q2 is significantly lower due to the initiated lockdown and consequent extension of deadlines to 23rd July 2020.

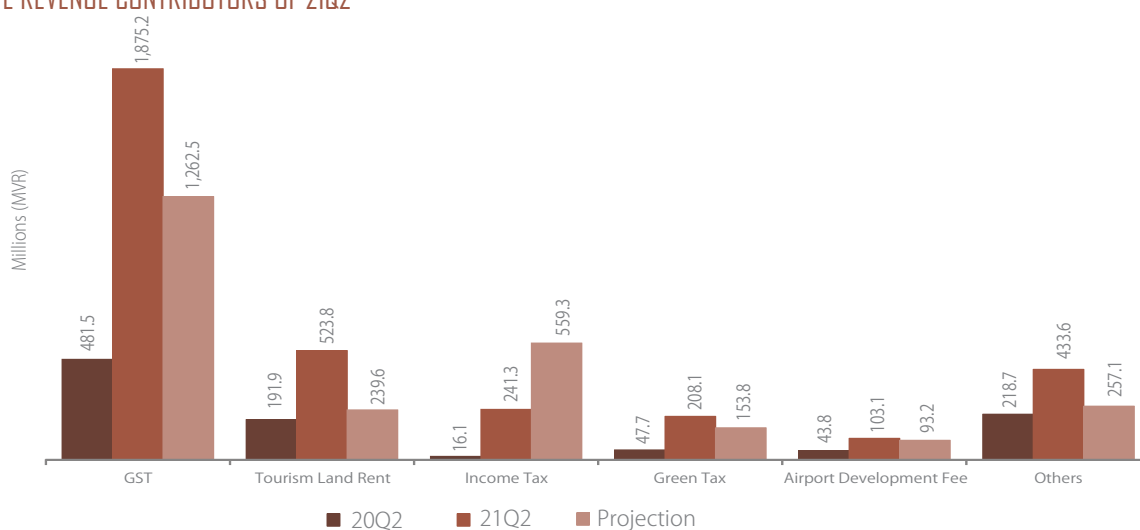
Compared to the forecast for 21Q2, performance of the major tax revenues, namely; TGST, GGST, and Airport Service Charge are highly favorable during the quarter.

NON-TAX REVENUES

For non-Tax Revenues, an increment of MVR 577.75 million was observed for 21Q2, when compared to the corresponding quarter of 2020.

The increment compared to 20Q2 was mainly due to the higher collection of Tourism Land Rent. Tourism Land for 20Q2 and 20Q3 was deferred to 2021 by the government to facilitate the taxpayers as the resorts were closed down during the initial lockdown. In 21Q2, collection resumed as per the schedule and the deferred rent collection contributed to the comparative increment.

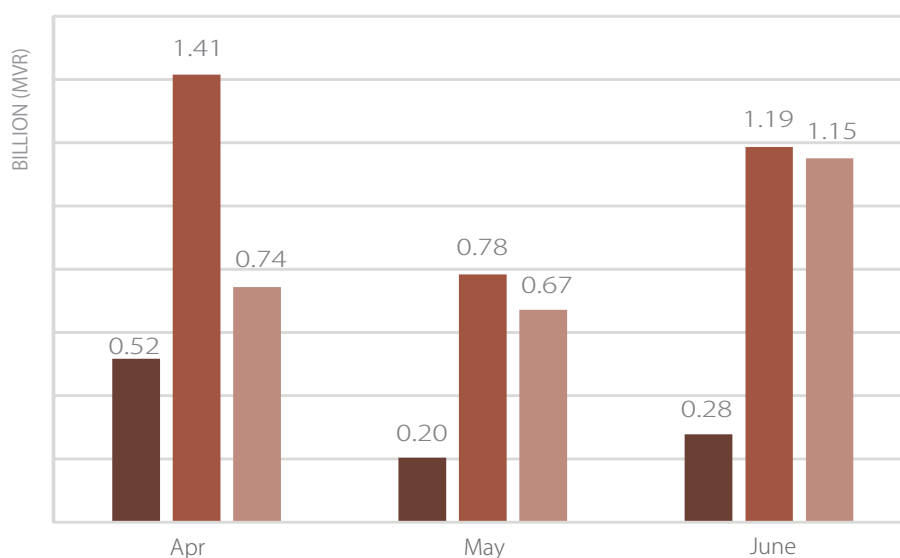
### 1.3 TOP FIVE REVENUE CONTRIBUTORS OF 21Q2



Revenue	Compared to 20Q2	Compared to Projection	Share of 21Q2
GST	+289.5%	+48.5%	55.4%
TOURISM LAND RENT	+173.0%	+118.6%	15.5%
INCOME TAX	+1395.9%	-56.8%	7.1%
GREEN TAX	+336.7%	+35.3%	6.1%
AIRPORT DEVELOPMENT FEE	+135.7%	+10.6%	3.0%

Top 5 revenue contributors for the quarter mutually accounted for 87.2% of the total revenue.

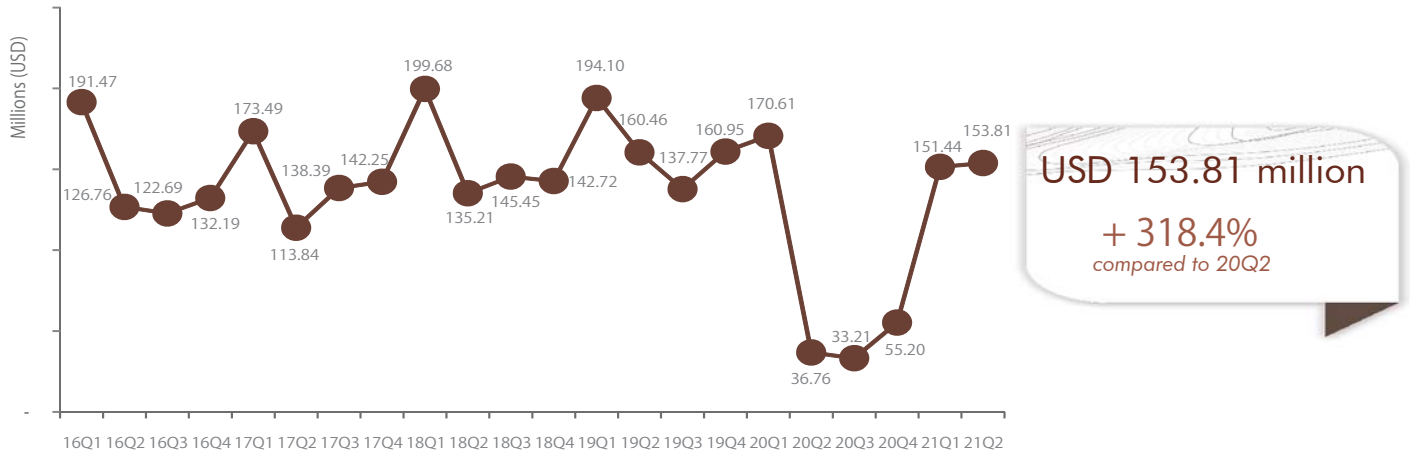
### 1.4 COMPARISON AGAINST 20Q2



Months	Compared to 2020	Compared to Projection
April	+173.8%	+90.2%
May	+283.6%	+16.7%
June	+326.2%	+3.2%

## 2. USD REVENUE COLLECTION

### 2.1 USD COLLECTION

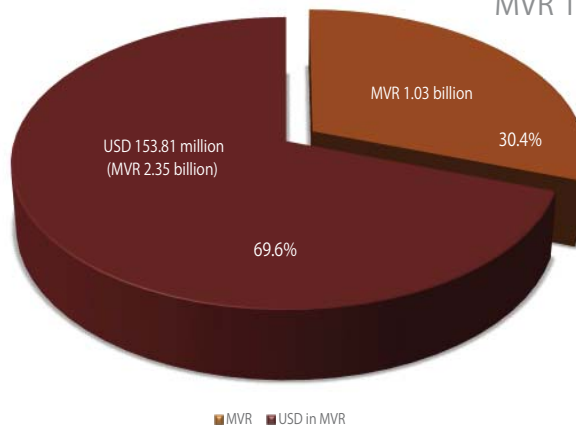


USD collection in 21Q2 sums to USD 153.81 million, which is an increment of 318.4% compared to 20Q2.

The collection in 20Q2 is significantly lower as the nationwide lockdown was initiated and MIRA was closed down and the tax and non-tax deadlines were deferred. The two major USD revenue contributors, TGST and Tourism Land Rent, collection is comparatively higher in 21Q2 than 20Q2. As the Tourism Land Rent collection had resumed according to the schedule along with deferred rent from 2020, and the higher sales reported by the resorts had led to a significant increment in revenue collection.

### 2.2 CURRENCY COMPOSITION

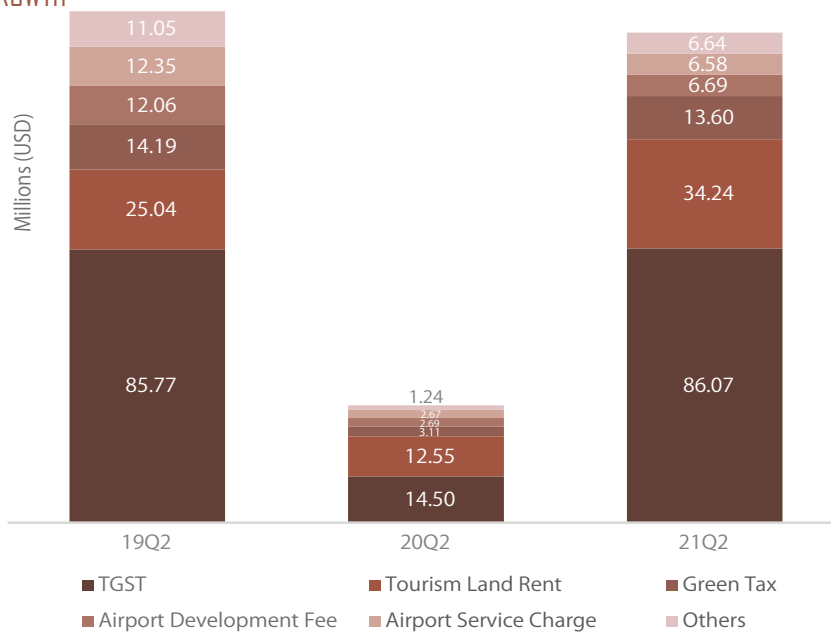
Revenue received in MVR accounts for 30.4% of the revenue, which is MVR 1.03 billion.



69.6% of the revenue was received in USD (USD 153.81 million), which is equivalent to MVR 2.35 billion.

## 2.3

### USD REVENUE GROWTH

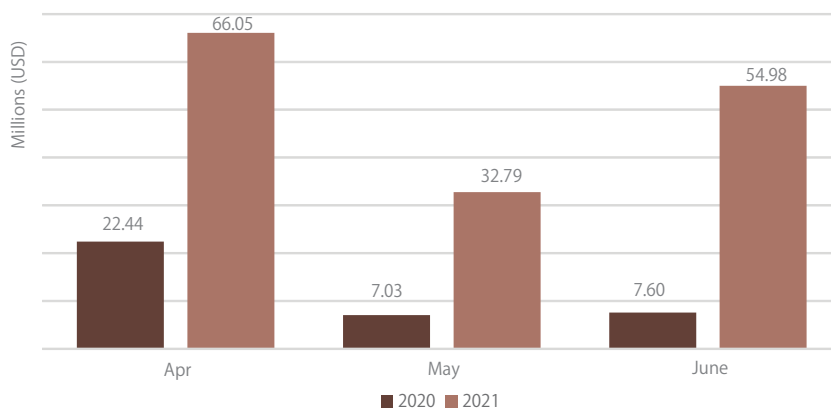


Revenue	Compared to 20Q2	Share of 21Q2
TGST	+493.4%	56.0%
TOURISM LAND RENT	+172.8%	22.3%
GREEN TAX	+337.8%	8.8%
AIRPORT DEVELOPMENT FEE	+148.9%	4.3%
AIRPORT SERVICE CHARGE	+146.0%	4.3%

The top five USD revenue contributors mutually account for 95.7% of the total USD revenue.

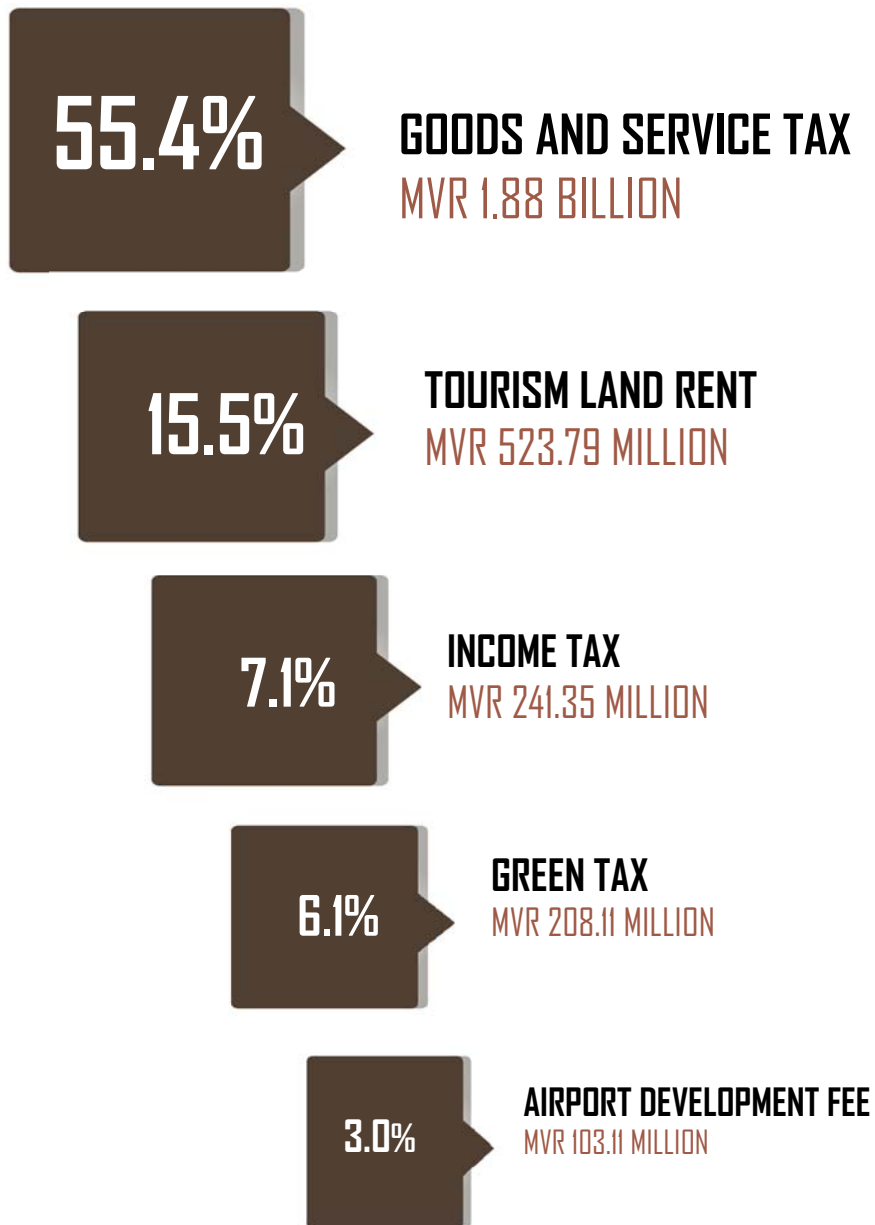
## 2.4

### COMPARISON AGAINST 20Q2: MONTHLY



Months	Compared to 2020
April	+194.4%
May	+366.6%
June	+623.5%

## TOP REVENUE CONTRIBUTORS

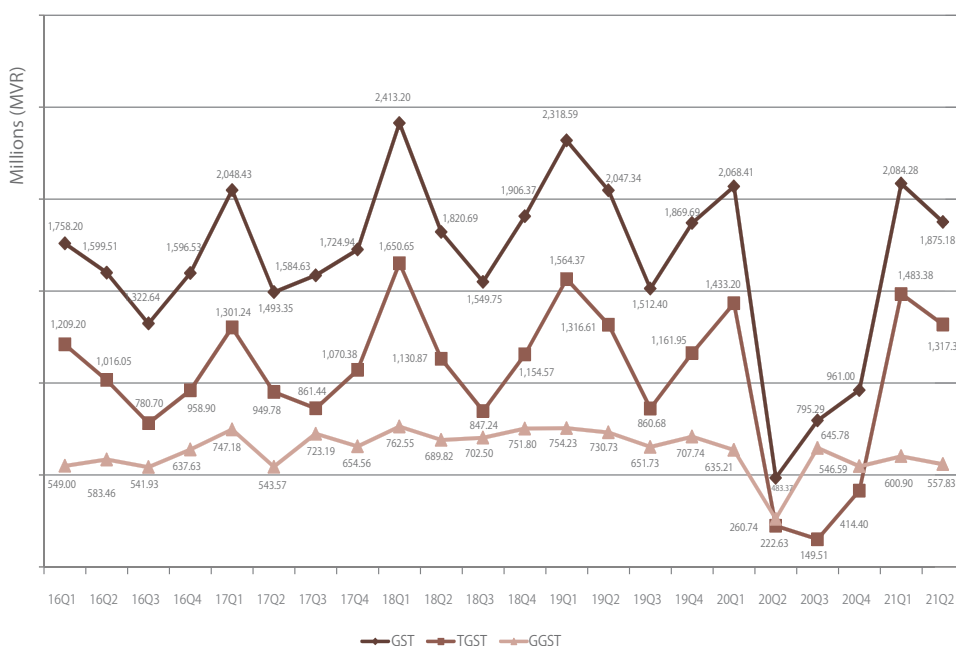


### 3.1

#### TOTAL GST COLLECTION

**MVR 1.88 billion**  
 + 289.5%  
 compared to 20Q2  
 + 48.5%  
 compared to projection for the quarter

70.3% of the GST collection relates to tourism sector, while the remaining 29.7% relates to the GST from general sector in 21Q2.



### 3.1.1

#### TGST COLLECTION

**MVR 1.32 billion**  
 + 492.3%  
 compared to 20Q2  
 + 61.9%  
 compared to projection for the quarter

### 3.1.2

#### GGST COLLECTION

**MVR 557.83 million**  
 + 115.4%  
 compared to 20Q2  
 + 24.3%  
 compared to projection for the quarter

### 3.1.1

#### TGST COLLECTION

In 20Q2, due to the nation-wide lockdown, restrictive measures were put in place and the on-arrival visas were suspended as a preventive measure to fight against the Covid-19 Pandemic. Activity in the tourism sector came to a standstill and the revenue collected from the sector declined steeply. Since the re-opening of resorts, revenue collection in 21Q2 shows an increment of almost 6 times the collection of 20Q2.

### 3.1.2

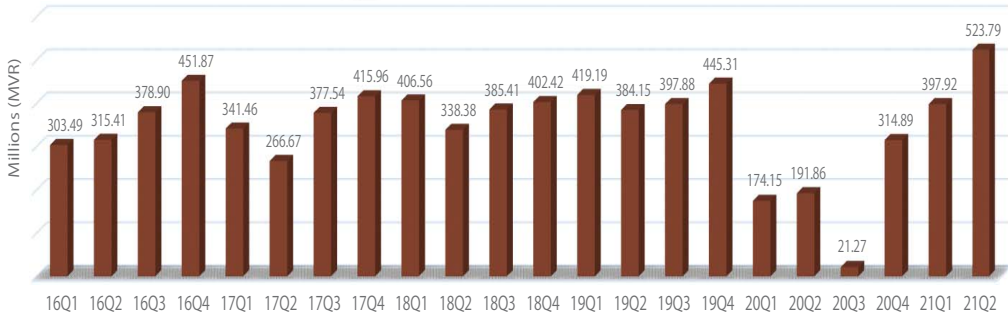
#### GGST COLLECTION

GGST revenue for 21Q2 had significantly increased by 115.4% and 24.3%, when compared to 20Q2 and projection, respectively. In 20Q2, due to the lockdown, the overall economic activity slowed down as the demand in the wholesale and retail sector declined. With the gradual recovery of the economy, and increasing activity of the tourism sector GGST collection for the quarter is higher than the forecast for 21Q2. Increase in tourism related activities directly drive the economic activities of the general sector.

### 3.2

#### TOURISM LAND RENT

**MVR 523.79 million**  
 + 173.0%  
 compared to 20Q2  
 - 6.3%  
 compared to projection for the quarter



To facilitate taxpayers in the tourism sector during the pandemic, Tourism Land Rent deadlines for the 2nd and 3rd quarters of 2020 were deferred to 2021. During 21Q2 timely rent payments were received as per the schedule.

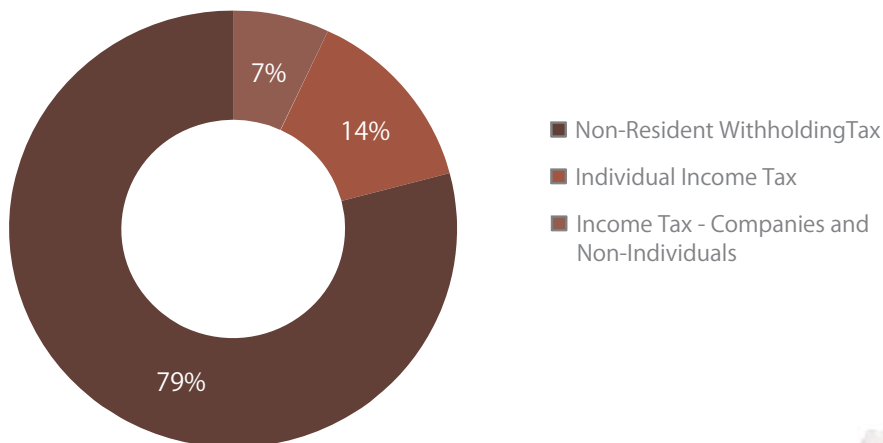
However, non-payment from few taxpayers led to a decrement of revenue by 6.3% compared to forecasted revenue.

### 3.3

#### TOTAL INCOME TAX COLLECTION

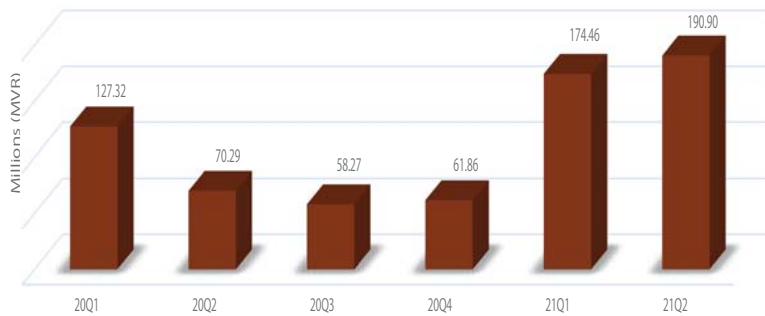
**MVR 241.35 million**  
 +191.3%  
 compared to 20Q2  
 + 0.7%  
 compared to projection for the quarter

Income Tax consists of Bank Income Tax, Income Tax from Companies and Non-individuals, Individual Income Tax (includes Personal Income tax by Individuals and Employee Withholding Tax), Transport Operator Income and Non-Resident Withholding Tax. The highest income tax contributor in 21Q2 is Non-Resident Withholding Tax followed by Individual Income Tax and Income Tax from Companies and Non-individuals.



### 3.3.1

#### NON-RESIDENT WITHHOLDING TAX



**MVR 190.90 million**

**+ 171.6%**  
compared to 20Q2

**+ 63.0%**  
compared to projection for the quarter

Non-Resident Withholding tax receipts increased in 21Q2 by 171.6%, compared to 20Q2. In 21Q2, Non-resident WHT was mostly withheld from fees for technical services, followed by dividends paid to non-residents, royalty and commissions paid for services provided in the Maldives.

### 3.3.2

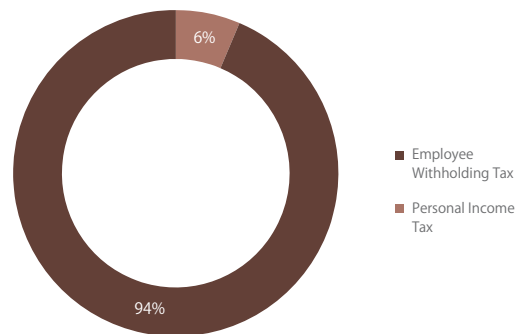
#### INDIVIDUAL INCOME TAX

Total Individual Income Tax consist of revenue received from Personal Income Tax and Employee Withholding Tax.

**MVR 33.65 million**

**+ 627.0%**  
compared to 20Q2

**+ 40.7%**  
compared to projection for the quarter



#### 3.3.2.1

##### EMPLOYEE WITHHOLDING TAX

**MVR 31.49 million**

**+ 580.4%**  
compared to 20Q2

**+ 66.5%**  
compared to projection for the quarter

#### 3.3.2.2

##### PERSONAL INCOME TAX

**MVR 2.16 million**

**-56.9%**  
compared to projection for the quarter

Remuneration received by employees is subject to Employee Withholding Tax since April 2020, under income brackets and rates specified in the Income Tax Act. 94% of the Individual Income Tax collection is attributed to Employee Withholding Tax, which sums to MVR 31.49 Million.

Pursuant to the Income Tax Act, EWT commenced from April 2020, and due to the lockdown and the halt in tourism activities in the sector led to decrement in salaries reported to MIRA. The rebound of tourism sector meant employees getting back their initial remuneration, which led to the increment in EWT collection compared to projection and corresponding quarter of 2020

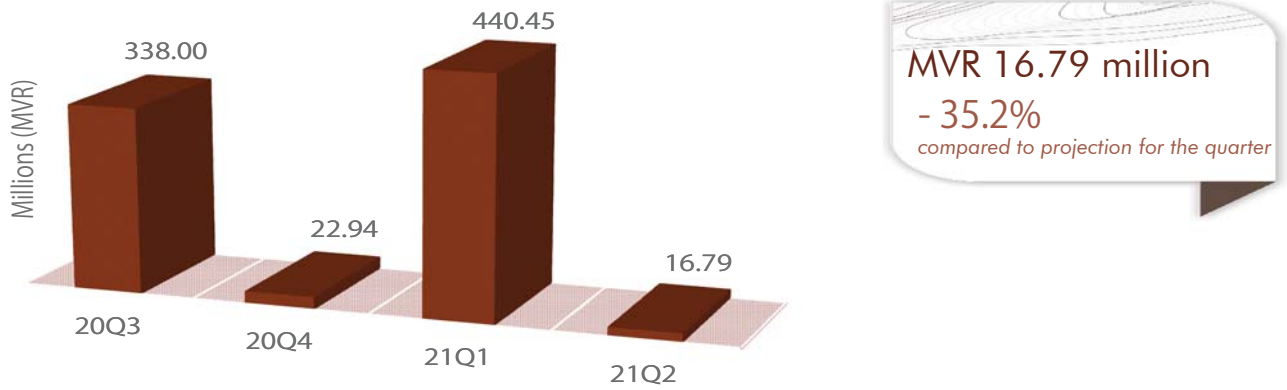
In 21Q2, 6% of Individual Income Tax relates to Personal income Tax, which sums to MVR 2.16 million . Late payments from the Second Interim payment deadline for the tax year 2020 was received in 21Q2.

Pursuant the new Income Tax Act, Personal Income Tax collection from sole proprietors commenced from July 2020, thus no comparison was made to 20Q2.

In 21Q2, MIRA was closed during the surge of covid cases, the deadline for final payment had been extended to August 2021, hence the decrement compared to projection.

### 3.3.3

#### INCOME TAX - COMPANIES AND NON-INDIVIDUALS

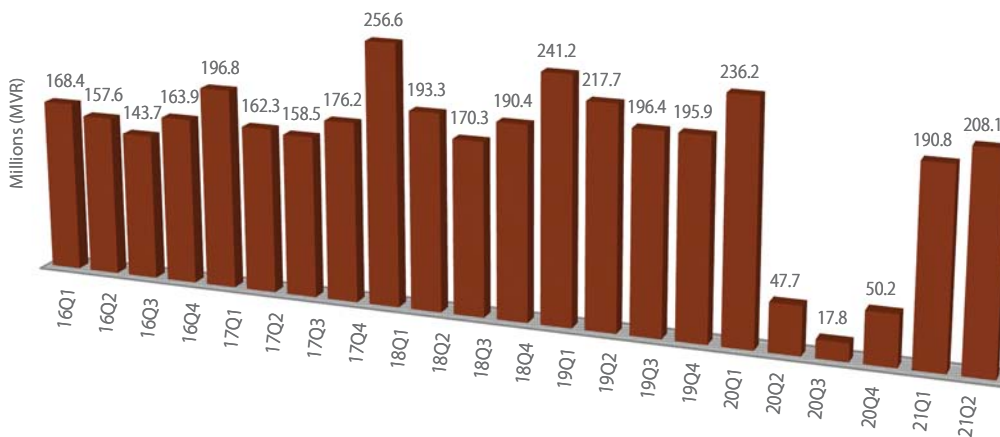


Collection of Income Tax from companies and non-individuals sums up to MVR 16.79 million in 21Q2. There was no deadline in 21Q2, and dues from previous tax deadlines were collected in this quarter.

### 3.4

#### GREEN TAX

**MVR 208.11 million**  
**+ 336.7%**  
*compared to 20Q2*  
**+ 35.3%**  
*compared to projection for the quarter*

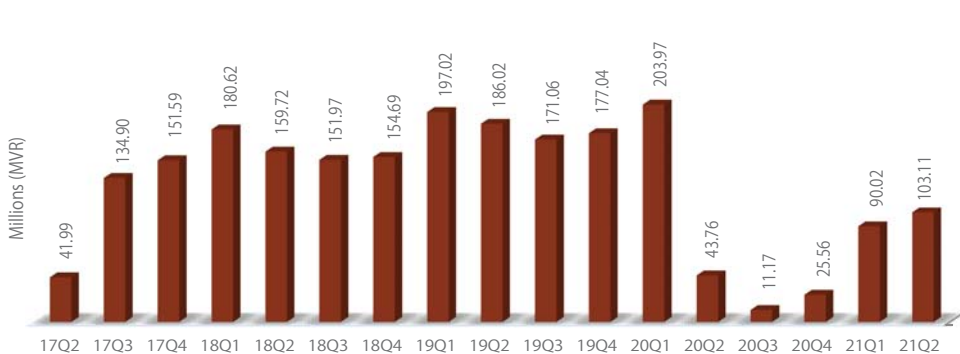


Revenue from Green Tax amounts to MVR 208.11 million. This is an increment of 336.7% compared to 20Q2. Revenue collection in 20Q2 was significantly lower due to the closure of border. During the lockdown period, mostly dues from previous deadlines were collected and the deadlines that fell to the dates of the lockdown were deferred. Tourist arrivals have increased during this period of 2021, leading to increment in collection.

Likewise, with the gradual recovery of tourism sector, bednights and tourist arrivals were slightly higher than the forecast which resulted in the increment in Green Tax revenue compared to projection.

### 3.5

#### AIRPORT DEVELOPMENT FEE



**MVR 103.11 million**  
**+ 135.7%**  
*compared to 20Q2*  
**+ 10.6%**  
*compared to projection for the quarter*

Quarterly revenue collection from Airport Development Fee sums to 103.11 million in 21Q2. This is an increment of 135.7% compared to the collection of 20Q2. This sharp increment in revenue is because in 2020 tourist arrivals halted when borders were closed.

Compared to the forecasted departure, increment in actual departures during this period led to this favorable outcome compared to the forecasted revenue.

## B. ACTIVITIES DURING THE QUARTER



### LAWS AND REGULATIONS

**2021/R-55** Second amendment to the Income Tax Regulation



### TAXPAYER AWARENESS PROGRAMS

**7** information session  
to new registrants  
(32 participants)

**15** Income Tax information  
sessions  
to taxpayers and public  
(170 participants)

**2** MIRAconnect sessions  
6 participants

**6** Media Interviews



## COMPLIANCE

**165** compliance visits  
(159 compliance visits in Male'  
6 compliance visits - Regional)

## AUDITS AND INVESTIGATIONS

Tax type	No of audits	Additional Tax Assessed (MVR)
Business Profit Tax	43	18,946,289
Goods and Services Tax (Non-Tourism)	35	5,728,119
Goods and Services Tax (Tourism Sector)	12	1,564,390
Withholding Tax	8	303,639
Green Tax	7	63,561
Airport Taxes and Fees	1	209,820
<b>Total</b>	<b>106</b>	<b>26,815,818</b>

**3** Investigation audits completed.  
Additional Tax Assessed:  
**MVR 4.84 million**

**106**

AUDITS

**MVR 26.82 million**  
ADDITIONAL TAX ASSESSED



## ENFORCED COLLECTION

TOTAL ENFORCED COLLECTION MVR 263,815,677



Amount recovered under:

Dunning MVR 141,736,342

Dues Clearance MVR 69,176,830

Reminder calls/emails MVR 52,902,505

Final notices issued to 744 non-filers and 831 non-payers

Installment plans granted to 108 taxpayers in 21Q2

### Arrears as at 30th June 2021

Category	Principal amount	Fines	Total
Tax Dues	1,749,899,654	1,745,651,961	3,495,551,615
Non-Tax Dues	3,132,959,648	12,552,262,460	15,685,222,108
<b>Total</b>	<b>4,882,859,301</b>	<b>14,297,914,421</b>	<b>19,180,773,722</b>

### Total fine relief granted during 21Q2

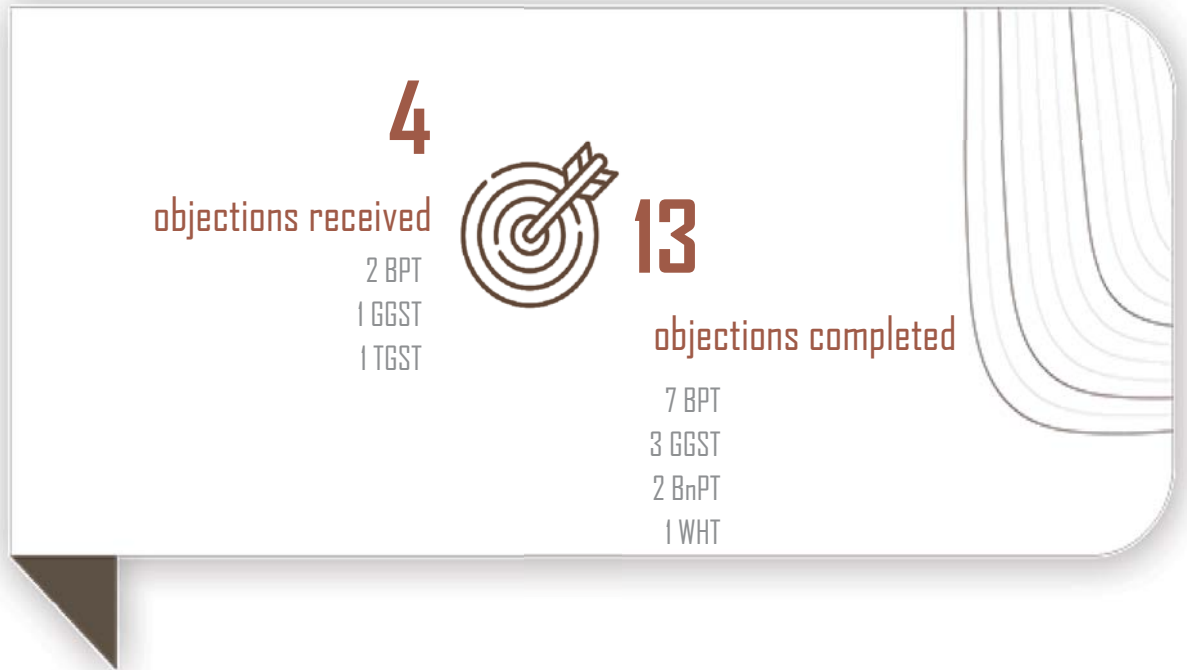
No. of relief given cases	Total (MVR)
579	27,885,005



## REGISTRATIONS

Category	Registrants at the beginning of the quarter	New registrants	De-registrations	Net total
Income Tax	45,041	1,724	-	46,765
TGST	2,295	55	19	2,331
GGST	12,523	148	63	12,608
Green Tax	1,746	41	16	1,771
Airport Taxes and Fees	56	-	-	56
Tourism Land Rent	433	5	-	438

## OBJECTIONS



## LEGAL ACTIONS



- 1** case filed by MIRA
- 5** judgement passed in favour of MIRA
- 6** cases filed against MIRA
- 7** judgements passed against MIRA

## HR MANAGEMENT



**292**

staff working at MIRA  
at the end of the quarter

**5**

staff recruited during the quarter

**9**

staff terminated/ released during the quarter

## TRAININGS AND CONFERENCES



Overseas (Virtual)

**2**

Conferences/Seminars  
6 participants

**17**

Trainings  
78 participants

Local

**1**

Conferences/Seminars  
1 participant

Staff Development Programs

**4**

Trainings

Audit Workshops

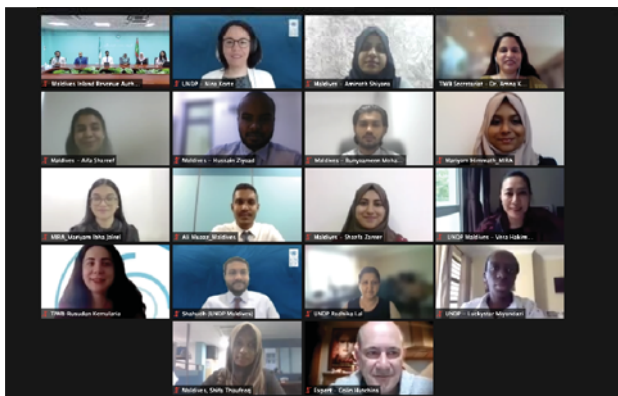
**1**

Training

## C. Snapshots of the Quarter

29 June

Second cooperation agreement signed between MIRA and TIWB for audit assistance



# D. DETAILED REVENUE FIGURES

**Table 1** Total Revenue Contribution, 21Q2 and Comparison Against 20Q2 (MVR)

Description	21Q2	20Q2	Growth	% Share
<b>TAX REVENUES</b>	<b>2,483,600,792</b>	<b>675,732,290</b>	<b>267.5%</b>	<b>73.4%</b>
Airport Service Charge	100,718,634	43,320,294	132.5%	3.0%
BPT	52,939,453	16,686,867	217.3%	1.6%
Bank Income Tax	-	7,944,756	-100.0%	0.0%
Income Tax-Companies and Non-individuals	16,794,905	-	-	0.5%
Employee Withholding Tax	31,491,229	4,628,415	580.4%	0.9%
Personal Income Tax	2,156,742	-	-	0.1%
Transport Operator Income Tax	-	-	-	0.0%
Withholding Tax	4,720,015	3,560,280	32.6%	0.1%
Non-Resident Withholding Tax	190,904,643	70,285,608	171.6%	5.6%
Green Tax	208,113,435	47,659,644	336.7%	6.1%
GGST	557,830,123	259,032,495	115.4%	16.5%
TGST	1,317,352,294	222,417,514	492.3%	38.9%
Land Sales Tax	-	-	-	0.0%
Remittance Tax	-	-	-	0.0%
Revenue Stamp	579,318	196,417	194.9%	0.0%
<b>NON-TAX REVENUES</b>	<b>901,529,878</b>	<b>323,780,807</b>	<b>178.4%</b>	<b>26.6%</b>
Airport Development Fee Charge	103,113,247	43,755,854	135.7%	3.0%
Business Permits <sup>1</sup>	11,091,462	5,220,961	112.4%	0.3%
Construction Period Extension Fee	-	-	-	0.0%
Corporate Social Responsibility Fee	2,045,820	3,129,720	-34.6%	0.1%
Fines	72,474,740	11,179,343	548.3%	2.1%
Land Acquisition and Conversion Fee	6,334,852	715,702	785.1%	0.2%
Lease Period Extension Fee	-	-	-	0.0%
Non-tourism Property Income <sup>2</sup>	21,581,726	5,985,081	260.6%	0.6%
Ownership Transfer Tax	1,679,500	-	-	0.0%
Proceeds from Sale of Assets <sup>3</sup>	3,954,912	249,278	1486.5%	0.1%
Resident Permit	2,319,200	36,074,250	-93.6%	0.1%
Royalties <sup>4</sup>	10,796,110	2,585,643	317.5%	0.3%
Tourism Land Rent	523,793,057	191,862,941	173.0%	15.5%
Vehicle Fee	23,082,663	12,041,068	91.7%	0.7%
Vessels Fee	4,962,334	1,525,580	225.3%	0.1%
Work Permit Fee	90,345,100	-	-	2.7%
Zakat Al-Mal	23,611,254	9,346,719	152.6%	0.7%
Others <sup>5</sup>	343,900	108,668	216.5%	0.0%
<b>Total</b>	<b>3,385,130,669</b>	<b>999,513,096</b>	<b>238.7%</b>	<b>100%</b>

<sup>1</sup> Business Permits: Company Annual Fee, Restaurant, Café, Canteen Fee, Flat Maintenance Fee, Partnership Fees, Import Trade Fee, Co-operative Society Fees, Sole Trader Registration Fee, Trade Registry Fee, Foreign Investment Administration Annual Fee, Company Registration Fee, Foreign Business Fee, Dive School Registration Fee, Guest House Registration Fee, Other Registrations & License, Motor Vehicle and Vessel, Bank Mortgage Registration Fee, Sale of Tender Documents, Sale of Pass

<sup>2</sup> Non-tourism Property Income: Uninhabited Islands Rent, Government Buildings Rent, Commercial Land Rent, Rent from land for Industry, Longterm Agricultural leased islands rent, Rent from Floating Jetty, Uninhabited Islands Administration Fee

<sup>3</sup> Proceeds from Sale of Assets: Sale of items at auction, Sale of Government Buildings, Sale of Government Lands

<sup>4</sup> Royalties: Duty Free Royalty, Foreign Investment Royalty, Fishing Royalty, Fuel re-export Royalty, Re-Export Royalty, Yellowfin Tuna Export Royalty, Skipjack Industry Royalty

<sup>5</sup> Others: Other Registration and License fees, Reimbursement from previous year's budget, Sadaqa/Donation, Loan repayment & National student loan

**Table 2** Total USD Revenue Contribution, 21Q2 (USD)

Description	21Q2	% Share
TGST	86,067,418	56.0%
Tourism Land Rent	34,240,496	22.3%
Green Tax	13,598,130	8.8%
Airport Development Fee	6,686,981	4.3%
Airport Service Charge	6,575,424	4.3%
Others	6,644,180	4.3%
<b>Total</b>	<b>153,812,628</b>	<b>100.0%</b>

\* Others: Land Acquisition and Conversion Fee, Business Permits, BPT, Fines, Corporate Social Responsibility Fee, Income Tax, Ownership Transfer Tax, Vessel Fee, Zakat Al-Mal

**Table 3** Comparison Against Projection (MVR)

Description	Actual 21Q2	Projection 21Q2	% Variance
<b>TAX REVENUES</b>	<b>2,483,600,792</b>	<b>1,749,040,218</b>	<b>42.0%</b>
Airport Service Charge	100,718,634	92,660,388	8.7%
BPT	52,939,453	-	-
Bank Income Tax	-	72,699,589	-100.0%
Income Tax-Companies and Non-individuals	16,794,905	25,908,197	-35.2%
Employee Withholding Tax	31,491,229	18,913,793	66.5%
Personal Income Tax	2,156,742	5,002,345	-56.9%
Transport Operator Income Tax	-	-	-
Withholding Tax	4,720,015	-	-
Non-Resident Withholding Tax	190,904,643	117,087,993	63.0%
Green Tax	208,113,435	153,770,074	35.3%
GGST	557,830,123	448,602,767	24.3%
TGST	1,317,352,294	813,904,621	61.9%
Land Sales Tax	-	-	-
Remittance Tax	-	-	-
Revenue Stamp	579,318	490,450	18.1%
<b>NON-TAX REVENUES</b>	<b>901,529,878</b>	<b>816,406,923</b>	<b>10.4%</b>
Airport Development Fee Charge	103,113,247	93,195,760	10.6%
Business Permits <sup>1</sup>	11,091,462	5,863,484	89.2%
Construction Period Extension Fee	-	-	-
Corporate Social Responsibility Fee	2,045,820	-	-
Fines	72,474,740	2,290,915	3063.6%
Land Acquisition and Conversion Fee	6,334,852	652,111	871.4%
Lease Period Extension Fee	-	-	-
Non-tourism Property Income <sup>2</sup>	21,581,726	22,645,499	-4.7%
Ownership Transfer Tax	1,679,500	-	-
Proceeds from Sale of Assets <sup>3</sup>	3,954,912	1,503,092	163.1%
Quota Fee	-	39,266,667	-100.0%
Resident Permit	2,319,200	60,699,074	-96.2%
Royalties <sup>4</sup>	10,796,110	7,052,085	53.1%
Tourism Land Rent	523,793,057	559,293,521	-6.3%
Vehicle Fee	23,082,663	20,083,953	14.9%
Vessels Fee	4,962,334	3,782,539	31.2%
Work Permit Fee	90,345,100	-	-
Zakat Al-Mal	23,611,254	-	-
Others <sup>5</sup>	343,900	78,224	339.6%
<b>Total</b>	<b>3,385,130,669</b>	<b>2,565,447,141</b>	<b>32.0%</b>

<sup>1</sup>Refer to Table 1 footnotes for details

**Table 4 Multi-year Summary (MVR in millions)**

Description	Actual 18Q2	Actual 19Q2	Actual 20Q2	Actual 21Q2
<b>TAX REVENUES</b>	<b>2,728.4</b>	<b>3,179.9</b>	<b>675.7</b>	<b>2,483.6</b>
Airport Service Charge	158.8	189.5	43.3	100.7
BPT	140.2	347.6	16.7	52.9
Bank Income Tax	213.7	177.6	7.9	-
Income Tax-Companies and Non-individuals	-	-	-	16.8
Employee Withholding Tax	-	-	4.6	31.5
Personal Income Tax	-	-	-	2.2
Transport Operator Income Tax	-	-	-	-
Withholding Tax	152.9	166.1	3.6	4.7
Non-Resident Withholding Tax	-	-	70.3	190.9
Green Tax	193.3	217.7	47.7	208.1
GGST	689.8	730.7	259.0	557.8
TGST	1,130.9	1,316.6	222.4	1,317.4
Land Sales Tax	8.9	2.5	-	-
Remittance Tax	28.3	27.2	-	-
Revenue Stamp	11.6	4.4	0.2	0.6
Tourism Tax	-	-	-	-
<b>NON-TAX REVENUES</b>	<b>772.4</b>	<b>810.1</b>	<b>323.8</b>	<b>901.5</b>
Airport Development Fee	159.7	186.0	43.8	103.1
Business Permits <sup>1</sup>	9.9	9.2	5.2	11.1
Construction Period Extension Fee	17.3	6.1	-	-
Corporate Social Responsibility Fee	-	-	3.1	2.0
Fines	43.2	42.8	11.2	72.5
Land Acquisition and Conversion Fee	24.7	4.4	0.7	6.3
Lease Period Extension Fee	-	-	-	-
Non-tourism Property Income <sup>2</sup>	30.4	30.8	6.0	21.6
Ownership Transfer Tax	0.1	0.1	-	1.7
Proceeds from Sale of Assets <sup>3</sup>	9.6	2.7	0.2	4.0
Resident Permit	66.5	70.7	36.1	2.3
Royalties <sup>4</sup>	17.0	20.9	2.6	10.8
Tourism Administration Fee	7.7	-	-	-
Tourism Land Rent	338.4	384.2	191.9	523.8
Vehicle Fee	22.8	27.3	12.0	23.1
Vessels Fee	5.5	6.0	1.5	5.0
Work Permit Fee	-	-	-	90.3
Zakat Al-mal	17.5	17.5	9.3	23.6
Others <sup>5</sup>	2.1	1.2	0.1	0.3
<b>Total</b>	<b>3,500.8</b>	<b>3,990.0</b>	<b>999.5</b>	<b>3,385.1</b>

<sup>1</sup> Business Permits: Company Annual Fee, Restaurant, Café, Canteen Fee, Flat Maintenance Fee, Partnership Fees, Import Trade Fee, Co-operative Society Fees, Sole Trader Registration Fee, Trade Registry Fee, Foreign Investment Administration Annual Fee, Company Registration Fee, Foreign Business Fee, Dive School Registration Fee, Guest House Registration Fee, Other Registrations & License, Motor Vehicle and Vessel, Bank Mortgage Registration Fee, Sale of Tender Documents, Sale of Pass

<sup>2</sup> Non-tourism Property Income: Uninhabited Islands Rent, Government Buildings Rent, Commercial Land Rent, Rent from land for Industry, Longterm Agricultural leased islands rent, Rent from Floating Jetty, Uninhabited Islands Administration Fee

<sup>3</sup> Proceeds from Sale of Assets: Sale of items at auction, Sale of Government Buildings, Sale of Government Lands

<sup>4</sup> Royalties: Duty Free Royalty, Foreign Investment Royalty, Fishing Royalty, Fuel re-export Royalty, Re-export Royalty, Yellowfin Tuna Export Royalty, Skipjack Industry Royalty

<sup>5</sup> Others: Other Registration and License fees, Reimbursement from previous year's budget, Sadaqa/Donation, Loan repayment & National student loan

**Table 5** Reported Sales from Tourism Categories (USD)

Description	2020	2021	Growth
Tourist Resort	810,724,018	164,296,446	+393%
Tour Operator	112,666,885	14,701,858	+666%
Domestic Air Transport	48,914,783	13,921,765	+251%
Tourist Hotel	11,956,651	3,998,210	+199%
Diving School	14,187,639	4,128,990	+244%
Tourist Guest House	8,724,434	9,424,661	-7%
Tourist Establishments Under Construction	-	-	-
Tourist Vessel	6,868,307	4,599,203	+49%
Water Sports Facility	5,002,206	1,724,719	+190%
Other Facilities	3,150,909	1,755,502	+79%
Spa	3,178,179	998,742	+218%
Shop	3,995,529	1,873,567	+113%
Foreign Tourist Vessel	4,999,102	1,018,382	+391%
	<b>1,034,368,643</b>	<b>222,442,046</b>	<b>+365%</b>

Above data is based on returns submitted for the periods of the initial deadline. Since Resorts were closed down and on-arrival visas were cancelled due to Covid-19, there is a steep decline in sales reported for the corresponding period of 2020 compared to 2021.

# QUARTERLY REPORT Q2

---

**20** April  
**21** May  
**21** June



MALDIVES  
INLAND REVENUE  
AUTHORITY

---